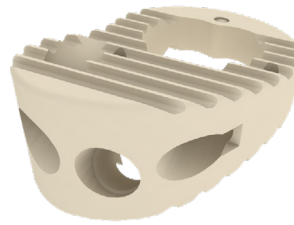


# trigon<sup>®</sup>

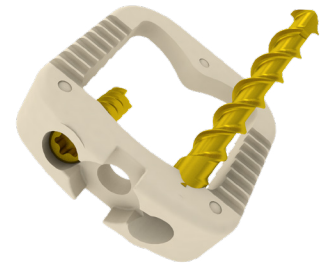
OSTEOTOMY WEDGE SYSTEM



Cotton



Evans



The Trigon<sup>®</sup> HA Stand-Alone Wedge is made of PEEK-Optima<sup>®</sup> HA Enhanced, where the HA is fully integrated into the PEEK (not just coated) making it available on all surfaces of the implant.

The Trigon HA Stand-Alone Wedge is provided in two different configurations to be used for Evans and Cotton osteotomies.

Available in a variety of sizes to accommodate unpredictable anatomical circumstances providing a precise and reliable correction.

The Trigon HA Wedge is a stand-alone device, does not require any additional fixation such as plating.

Offers ergonomic instrumentation that allows for accurate insertion and precise screw placement.



# ORDERING INFORMATION

## Evans Implants

Part Number	Description
EVP-16-18-06	PEEK Small Evans Wedge 6mm
EVP-16-18-08	PEEK Small Evans Wedge 8mm
EVP-16-18-10	PEEK Small Evans Wedge 10mm
EVP-16-18-12	PEEK Small Evans Wedge 12mm
EVP-18-20-06	PEEK Medium Evans Wedge 6mm
EVP-18-20-08	PEEK Medium Evans Wedge 8mm
EVP-18-20-10	PEEK Medium Evans Wedge 10mm
EVP-18-20-12	PEEK Medium Evans Wedge 12mm
EVP-20-22-06	PEEK Large Evans Wedge 6mm
EVP-20-22-08	PEEK Large Evans Wedge 8mm
EVP-20-22-10	PEEK Large Evans Wedge 10mm
EVP-20-22-12	PEEK Large Evans Wedge 12mm

## Cotton Implants

Part Number	Description
COP-16-16-06	PEEK Small Cotton Wedge 6mm
COP-16-16-07	PEEK Small Cotton Wedge 7mm
COP-16-16-08	PEEK Small Cotton Wedge 8mm
COP-18-20-06	PEEK Large Cotton Wedge 6mm
COP-18-20-07	PEEK Large Cotton Wedge 7mm
COP-18-20-08	PEEK Large Cotton Wedge 8mm

## Screws

Part Number	Description
WSC-25-10	2.50mm dia. 10mm long locking screw
WSC-25-12	2.50mm dia. 12mm long locking screw
WSC-25-14	2.50mm dia. 14mm long locking screw
WSC-25-16	2.50mm dia. 16mm long locking screw
WSC-25-18	2.50mm dia. 18mm long locking screw
WSC-25-20	2.50mm dia. 20mm long locking screw
WSC-25-22	2.50mm dia. 22mm long locking screw
WSC-25-24	2.50mm dia. 24mm long locking screw
WSC-25-26	2.50mm dia. 26mm long locking screw
WSC-25-28	2.50mm dia. 28mm long locking screw
WSC-25-30	2.50mm dia. 30mm long locking screw

## Instruments

Part Number	Description
WD-1001T-EVI	Evans Wedge Inserter
WD-1001T-COI	Cotton Wedge Inserter
WD-1000T-SREW	Trigon Screw Inserter
WD-1000T-TRI	Trigon Trial Inserter
WD-1000T-DRL	Trigon 1.5mm Drill
CSRW-1000T-350	K-Wires (2.4mmx230mm)
CSRW-1000T-800	Pickups
CSRW-1000T-501	Small AO Handle
INST-1000T-SPR	Lamina Spreaders
INST-1000T-HINT	Hintermann Pin Distractor
WD-1000T-GRFB	Trigon Graft Packing Block
WD-1000T-GRFT	Trigon Graft Packing Tamp

## Trials

Part Number	Description
WD-161806T-EV	Small Evans 6mm Trial
WD-161808T-EV	Small Evans 8mm Trial
WD-161810T-EV	Small Evans 10mm Trial
WD-161812T-EV	Small Evans 12mm Trial
WD-182006T-EV	Medium Evans 6mm Trial
WD-182008T-EV	Medium Evans 8mm Trial
WD-182010T-EV	Medium Evans 10mm Trial
WD-182012T-EV	Medium Evans 12mm Trial
WD-202206T-EV	Large Evans 6mm Trial
WD-202208T-EV	Large Evans 8mm Trial
WD-202210T-EV	Large Evans 10mm Trial
WD-202212T-EV	Large Evans 12mm Trial
WD-161606T-CO	Small Cotton 6mm Trial
WD-161607T-CO	Small Cotton 7mm Trial
WD-161608T-CO	Small Cotton 8mm Trial
WD-182006T-CO	Large Cotton 6mm Trial
WD-182007T-CO	Large Cotton 7mm Trial
WD-182008T-CO	Large Cotton 8mm Trial



### Nvision Biomedical Technologies

4590 Lockhill Selma  
San Antonio, TX 78249

☎ 210-545-3713 ext. 112

✉ [orders@nvisionbiomed.com](mailto:orders@nvisionbiomed.com)

🌐 [www.nvisionbiomed.com](http://www.nvisionbiomed.com)



Scan to visit  
our website.



View Evans in  
augmented reality.



View Cotton in  
augmented reality.