

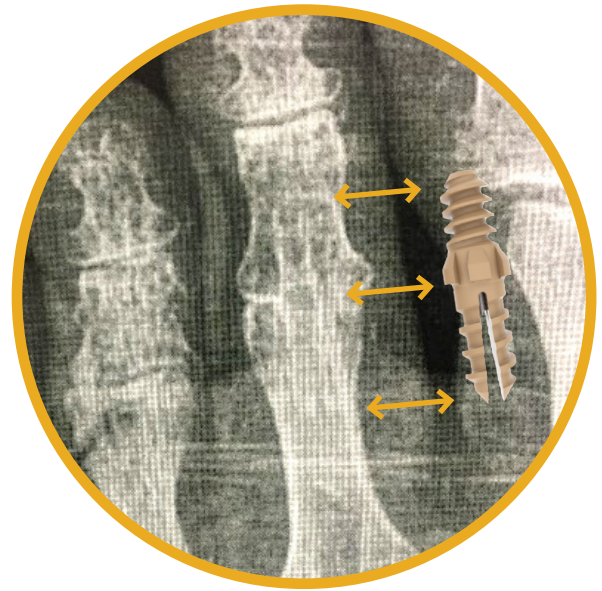
# vector<sup>®</sup>

## HAMMERTOES CORRECTION SYSTEM

The Vector<sup>®</sup> Hammertoe Implant is a one-piece device where the distal portion is screwed into the bone while the proximal portion is press-fitted into the bone.

The Vector Hammertoe Implant is made of PEEK-Optima HA Enhanced, where the HA is fully integrated into the PEEK (not just coated) making it available on all surfaces of the implant.

The implant contains a radiopaque locator pin to verify positioning and the radiolucent implant materials allows for fusion to be seen in post-op.



Non-cannulated



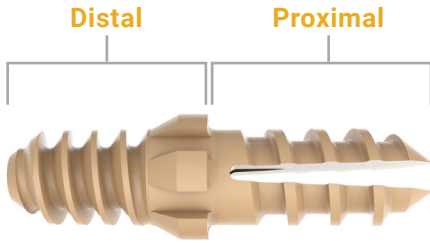
Cannulated



# ORDERING INFORMATION

**vector**<sup>®</sup>

HAMMERTOE CORRECTION SYSTEM



## Non-cannulated Hammertoe Implant

Part Number	Description
HAM-13-35	13mm long, 3.5mm Diameter
HAM-14-35	14mm long, 3.5mm Diameter
HAM-15-35	15mm long, 3.5mm Diameter
HAM-15-40	15mm long, 4.0mm Diameter
HAM-16-40	16mm long, 4.0mm Diameter
HAM-17-40	17mm long, 4.0mm Diameter

## Cannulated Hammertoe Implant

Part Number	Description
HAM-12-30C	12mm long, 3.0mm Diameter
HAM-13-30C	13mm long, 3.0mm Diameter
HAM-14-30C	14mm long, 3.0mm Diameter
HAM-15-30C	15mm long, 3.0mm Diameter
HAM-13-35C	13mm long, 3.5mm Diameter
HAM-14-35C	14mm long, 3.5mm Diameter
HAM-15-35C	15mm long, 3.5mm Diameter
HAM-15-40C	15mm long, 4.0mm Diameter
HAM-16-40C	16mm long, 4.0mm Diameter
HAM-17-40C	17mm long, 4.0mm Diameter

## Instruments

Part Number	Description
HAM-1001T-K11	K-wire (with laser marking)
HAM-1002T-K12	Double Trocar K-wire
HAM-1001T-TP30	Cannulated Tap 3.0mm diameter
HAM-1001T-TP35	Cannulated Tap 3.5mm diameter
HAM-1001T-TP40	Cannulated Tap 4.0mm diameter
HAM-1001T-DR30	Drill, 3.0mm
HAM-1001T-DR35	Drill, 3.5mm
HAM-1001T-DR40	Drill, 4.0mm
HAM-1001T-DR45	Drill, 4.5mm
HAM-1001T-ISRT	Implant Inserter
HAM-1001T-IS30	Implant Inserter, 3.0
HAM-1001T-SIZE	Implant Sizer
CSRW-1000T-500	Handle, Small



**Nvision**<sup>™</sup>  
biomedical technologies

**Nvision Biomedical Technologies**

4590 Lockhill Selma  
San Antonio, TX 78249

☎ 210-545-3713 ext. 112

✉ orders@nvisionbiomed.com

🌐 www.nvisionbiomed.com



Scan to visit  
our website.



Scan to view Vector<sup>®</sup>  
in augmented reality.

MAR-HLX-001 REV B